

The background features a faint, dotted map of China on the left side. On the right side, there is a large, light-colored outline of an excavator attachment, specifically a shear or crusher, with the model number 'JSD360H' visible on its side.

智能拆解属具 选购手册

烟台金山重工机械设备有限公司

JISAN HEAVY INDUSTRY LTD.

地址：山东省烟台市福山区高新技术产业园区金凤路41号

官网：www.jisanbr.net 电话：86-0535-2132368

**DEMOLITION AND RECYCLING EQUIPMENT
EXCAVATOR CRUSHER AND SHEAR**

产品目录


PRODUCT LIST

 **铰轴型粉碎钳**
Hinge Type Hydraulic Pulverizer **P01**

低噪音，结构紧凑。
Low noise and compact structure.

 **倒置型粉碎钳**
Inverted Type Hydraulic Pulverizer **P02**

低噪音，油缸倒置。
Low noise, the cylinder is upside down.

 **旋转大力型粉碎钳**
Rotating Vigorously Type Hydraulic Pulverizer **P03**


大油缸旋转，可更换耐磨斗齿。
The large oil cylinder rotates, and the wear-resistant bucket teeth can be replaced.

 **旋转型粉碎钳**
Rotary Type Hydraulic Pulverizer **P04**

铰轴结构，增加旋转。
Hinge shaft structure increases rotation.

 **MINI型粉碎钳**
MINI Type Hydraulic Pulverizer **P05**

轻便设计，匹配小型设备。
Lightweight design, matching small equipment.

 **重型粉碎钳**
Heavy-duty Hydraulic Pulverizer **P05**

结构坚固，更持久更耐用。
The structure is sturdy, more durable and durable.

 **高空液压剪**
Multi Crusher/Multi Shear **P06**

高空轻便设计，双油缸旋转，可更换斗齿。
High-altitude and lightweight design, double cylinder rotation, can replace the bucket teeth.

 **单缸小型液压剪**
Mini Single Cylinder Shear **P07**

匹配小型设备，触碰式机械回转。
Matching small equipment, touch type mechanical rotation.

 **单缸大力剪**
Single Cylinder Shear **P08**

大力剪切，钢结构高拆。
Shear vigorously and demolish the steel structure high.

 **双缸全刀型大力剪**
Double Cylinder Shear/Full Blade **P09**

双油缸旋转，各种钢结构拆除剪切。
The double cylinders rotate, and various steel structures are removed and sheared.

 **双缸半刀型大力剪**
Double Cylinder Shear/Half Blade **P10**

双油缸旋转，各种钢筋混凝土破碎。
The double oil cylinders rotate, and various reinforced concretes are broken.

 **单缸破碎剪**
Single Cylinder Crushing Shear **P11**

单油缸液压旋转，各种砖石混凝土破碎。
Single oil cylinder hydraulic rotation, all kinds of masonry concrete crushing.

 **重型液压剪**
Hydraulic Power Shear **P12**

单油缸旋转，各种钢结构拆除剪切。
Single oil cylinder rotates, and various steel structures are removed and sheared.

 **拆车钳 A**
Hydraulic Shear A (Car Dismantling) **P13**

精细拆解中小型车辆。
Fine dismantling of small and medium-sized vehicles.

 **拆车钳 C**
Hydraulic Shear C (Car Dismantling) **P14**

粗放拆解中大型车辆。
Extensive dismantling of medium and large vehicles.

 **拆车钳 E**
Hydraulic Shear E (Car Dismantling) **P14**

加强液压中大车型拆车设备。
Strengthen the dismantling of large and medium-sized vehicle beams, etc.

2009年2月烟台金山重工机械设备有限公司成立。
In February 2009, Yantai Jisan Heavy Industry Ltd. was formally established.

2010年12月公司破碎锤销量突破600台，实现当年销售额3500万。
In December 2010, the company's sales of hydraulic breakers exceeded 600 units, achieving sales of 35 million in that year.

2011年3月金山重工DLK品牌第一台快速连接器下线，标志着金山重工多元化发展路线正式拉开帷幕。
In March 2011, the first hydraulic quick hitch of Jisan Heavy Industry DLK brand went offline, marking the official opening of the diversified development route of Jisan Heavy Industry. In April 2011, other accessories such as hydraulic plate compactor and hydraulic grapple of Jisan Heavy Industries were rolled off the production line.

2011年4月金山重工振动夯、抓木器等其他属具陆续下线。

2012年11月金山重工正式定位专业的挖掘机属具制造商，当年已经拥有110个以上类别，50多个型号的产品生产能力，为挖掘机属具行业不断研发制造新产品。

In November 2012, Jisan Heavy Industry officially positioned a professional excavator attachment manufacturer. In that year it already had more than 10 categories and more than 50 models of production capacity. It continuously developed new products for the excavator attachment industry.

2013年5月陆续通过欧盟CE认证、CIMA资格认证、GOST-R认证。
In May 2013, it successively passed EU CE certification, CIMA qualification certification, and GOST-R certification.

2013年12月单次出口50万美元产品，得到国际客户好评。
In December 2013, a single export of 500,000 US dollars of products was well received by international customers.

2014年9月金山重工正式投资破碎锤生产，定位生产140级以上大型破碎锤制造企业。
In September 2014, Jisan Heavy Industry formally invested in the production of hydraulic breakers, positioning itself to produce large-scale breaker manufacturers above 140.

2015年12月金山重工165F、175F、185F系列加重型产品陆续投放市场。
In December 2015, Jisan Heavy Industries 165F, 175F, and 185F series heavy-duty products were successively put on the market.

2016年金山重工六款系列液压剪相继下线，走出国门。金山重工占地86亩地的新工厂正式开始启动。
In 2016, Jisan Heavy Industries six series of hydraulic shears were rolled off the production line and went abroad. Jisan Heavy Industries officially opened a new factory covering an area of 87,000 square meters.

2017年金山重工不断更新产品性能，推出重型液压剪、鳄鱼式粉碎钳、新型抓钢器等产品。购置多台数控机床，扩大生产能力。

In 2017, Jisan Heavy Industry continuously updated its product performance, and introduced products such as hydraulic power shear, hydraulic pulverizer, and new steel grabbers. Jisan Heavy Industry purchased multiple CNC machine tools to expand production capacity.

2018年上海国际工程机械宝马展(BAUMA CHINA)订单销量翻一倍。成功研发报废汽车拆解机等大型机械设备。

In November 2018, the sales volume of BAUMA CHINA at Shanghai International Construction Machinery doubled. Successfully developed large machinery and equipment such as scrap car dismantlers.

2019年继续参加国内外的中国(北京)国际工程机械展览与技术交流会等各大会，扩大世界影响力。

In 2019, we have participated in the China (Beijing) International Construction Machinery Exhibition and Technology Exchange Conference (BICEE) and other major exhibitions to expand the influence of the world.

2020年扩大生产能力，增加各类大型生产设备，提高拆车机、打桩机、重型液力剪等产品效能。

In 2020, we will expand production capacity, increase various types of large-scale production equipment, and improve the efficiency of car scrapers, pile drivers, and hydraulic power shears.

发展历程

DEVELOPMENT PROCESS

2020年扩大生产能力，增加各类大型生产设备，提高拆车机、打桩机、重型液力剪等产品效能。

In 2020, we will expand production capacity, increase various types of large-scale production equipment, and improve the efficiency of car scrapers, pile drivers, and hydraulic power shears.

2021年研发单缸大力剪、双缸大力剪等各种新型液压剪设备。

In 2021, a new 10,000 square meters workshop will be built.



公司介绍

COMPANY PROFILE

金山重工致力于自主研发、生产、销售挖掘机及各类配套作业装置的现代化制造企业。经过多年的发展公司拥有完善的技术研发团体和生产工艺，保证了产品的性能和质量。随着制造设备不断更新改造，确保了多达上百种大中小型号属具的生产供应。

公司主要生产：报废汽车拆解机、挖掘机、固定抓料机等大型机械设备及破碎锤、抓钢器、抓木器、液压剪、打桩机、连接器、莲花抓、振动夯、拆车钳等上百种挖掘机前端装置产品。下设金山、迪林科两个系列品牌。

公司秉承“效率至上、科技先行”的核心价值观，坚持技术创新和管理创新，全面推行卓越绩效管理和精益生产方式(LPS)，实现精准营销和品牌战略，综合运营效率持续提高。公司及产品先后通过ISO认证，高新技术企业认证，BV认证，SGS认证，CE认证，我们坚信质量是企业的生命，抓住质量源头，在生产方面严格控制自制件质量和制作工艺。

公司拥有自主进出口权，产品远销全球50多个国家和地区，在遍布全球的销售网络，无论您身在何处，金山重工全球的代理商经销商系统都可以为您提供一站式采购，多元化工程解决方案，金山完善的售后服务团队，解决了客户的后顾之忧。

公司持续推进国际化经营战略，不断加强国内外技术、管路、品牌运作方面的合作与交流，在产品布局、配套体系、人力资源和市场营销等领域逐步迈向国际化。

在未来，金山公司将充分利用多年来积累的丰富经验和形成的核心竞争优势，通过“精细化——多元化——国际化”这三大战略目标的实施来推进企业发展；全力打造一个专业的液压装备制造制造商，向着世界一流企业迈进！

Yantai Jisan Heavy Industry Ltd. is a modernized manufacture enterprise which is fully committed to research and development, production and sales all kinds of excavator attachments equipments. The main products include: Hydraulic breaker, Pile hammer, Hydraulic quick hitch, Hydraulic rotating grapple, Grab bucket, Plate compactor, Heavy duty ripper, Crusher, Earth auger, meanwhile also can customize special equipment according to customer's request, such as Pallet fork, Special thumbs, Tilt bucket, Tilt hitch etc.

The company has independent import and export rights. Products are sold all over the world. The company provides supporting and processing services for the domestic and foreign many excavator manufacturers to maximize meet customers' requirements.

Quality is the life of enterprise! Jisan company has intelligent technical team, perfect quality control system and service network; Grasp the quality source, in terms of production, strictly control of the homemade quality and production process. The company implemented 6S management, and continually improve the quality awareness of staff, combined with the assessment mechanism to supervise and inspect, and carry out quality one-votc veto to ensure product durability, reliability, fundamentally set up the concepts of Quality First.

In the future, Jisan Company will make full use of rich experience accumulated and the core competitive advantage formed in the past few years, to stride forward the world first-class enterprise.



双缸全刀型大力剪

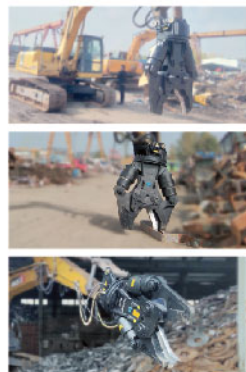
Double Cylinder Shear/Full Blade

适用对象: 适合钢结构架构厂房、大型废旧机械回收和汽车大梁等交通工具的解体作业。

主要特点: 针对高强度, 多数量的物料, 力量大剪切速度快。

Applicable object: It is suitable for the dismantling of transportation tools such as steel structure workshops, large-scale waste machinery recycling, and automobile girders.

Main features: For high-strength, large-quantity materials, high strength and fast shearing speed.



项目Item/型号Model	单位Unit	JSD40F	JSD50F	JSD80F	JSD180F	JSD280F	JSD380F	JSD480F
适配挖掘机 Suitable Excavator	ton	3-4	4-5	6-8	12-18	20-30	a:33+ / b:24+	b:40+
重量 Weight	kg	330	450	800	1540	2800	a:4300 / b:4800	b:6200
驱动压力 Driving Pressure	bar	200	240	240	300	320	320	350
驱动流量 Driving Flow	L/min	60	80	150	250	280	350	400
开口A Opening A	mm	225	375	505	680	740	800	920
剪口深B Cutting Depth B	mm	180	280	400	500	550	650	750
全长C Overall Length C	mm	1120	1310	1570	1950	2207	a:3200 / b:4000	b:5000
刀片长度D1/D2 Blade Length D1/D2	mm	165+103	205+155	260+175	325+210	350+260	350+360	400+400
中央剪切力 Shearing Force	ton	37	50	62	106	156	250	350
前端剪切力 Shearing Force	ton	24	32	43	73	100	150	200
张开周期 Open Cycle Time	sec	1.8	2.0	2.1	2.4	2.5	2.8	3.0
闭合周期 Close Cycle Time	sec	3.6	3.8	3.8	4.1	4.3	4.5	4.8

双缸半刀型大力剪

Double Cylinder Shear/Half Blade

适用对象: 适合大楼公寓、厂房梁柱等破拆剪切作业。

主要特点: 针对低噪音、低震动要求, 大力高空拆解作业。

Applicable object: It is suitable for demolition and shearing operations such as building apartments, factory beams and columns.

Main features: In response to low noise and low vibration requirements, vigorously high-altitude dismantling operations.



项目Item/型号Model	单位Unit	JSD40H	JSD50H	JSD80H	JSD160H	JSD220H	JSD260H	JSD360H
适配挖掘机 Suitable Excavator	ton	3-4	4-5	6-8	12-18	20-30	20-30	30-40
重量 Weight	kg	280	380	730	1370	2240	2370	2780
驱动压力 Driving Pressure	bar	200	240	240	300	320	320	320
驱动流量 Driving Flow	L/min	60	80	150	250	280	280	350
开口A Opening A	mm	360	500	630	1000	1100	1300	1550
剪口深B Cutting Depth B	mm	240	340	420	510	700	730	980
全长C Overall Length C	mm	970	1180	1720	2070	2370	2400	2785
刀片长度D Blade Length D	mm	120	120	120	160	200	200	240
中央剪切力 Shearing Force	ton	40	53	60	112	161	173	211
前端粉碎力 Crushing Force	ton	24	35	40	72	108	116	150
张开周期 Open Cycle Time	sec	1.8	2.0	2.1	2.4	2.5	2.5	2.8
闭合周期 Close Cycle Time	sec	3.6	3.8	3.8	4.1	4.3	4.3	4.5